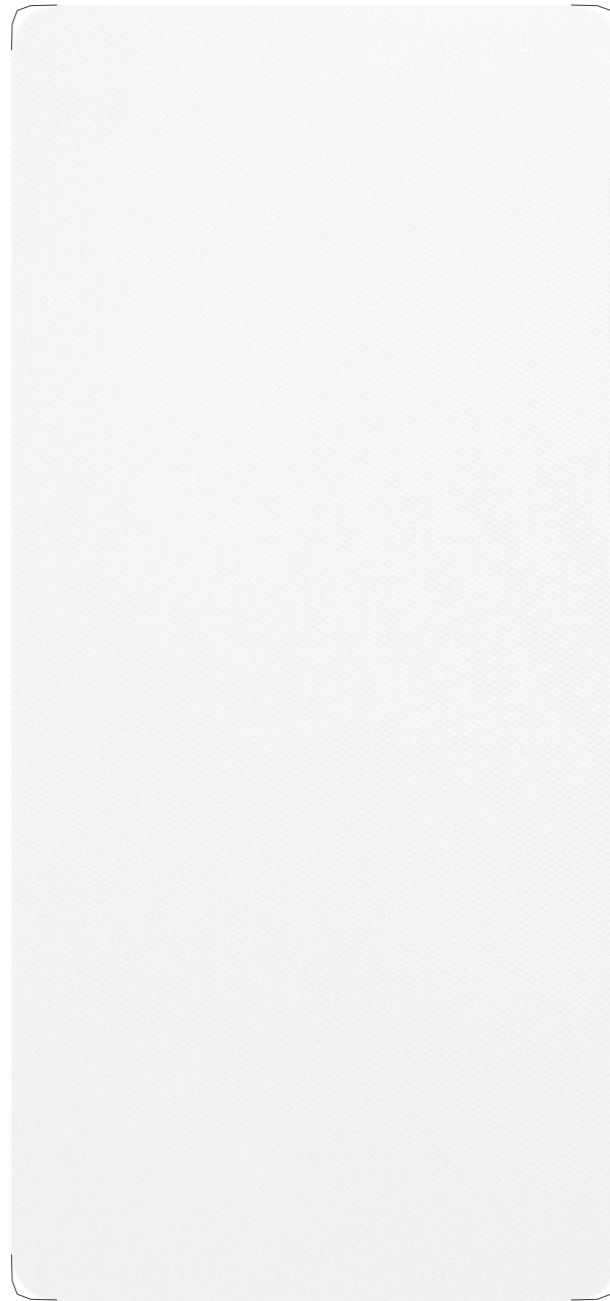




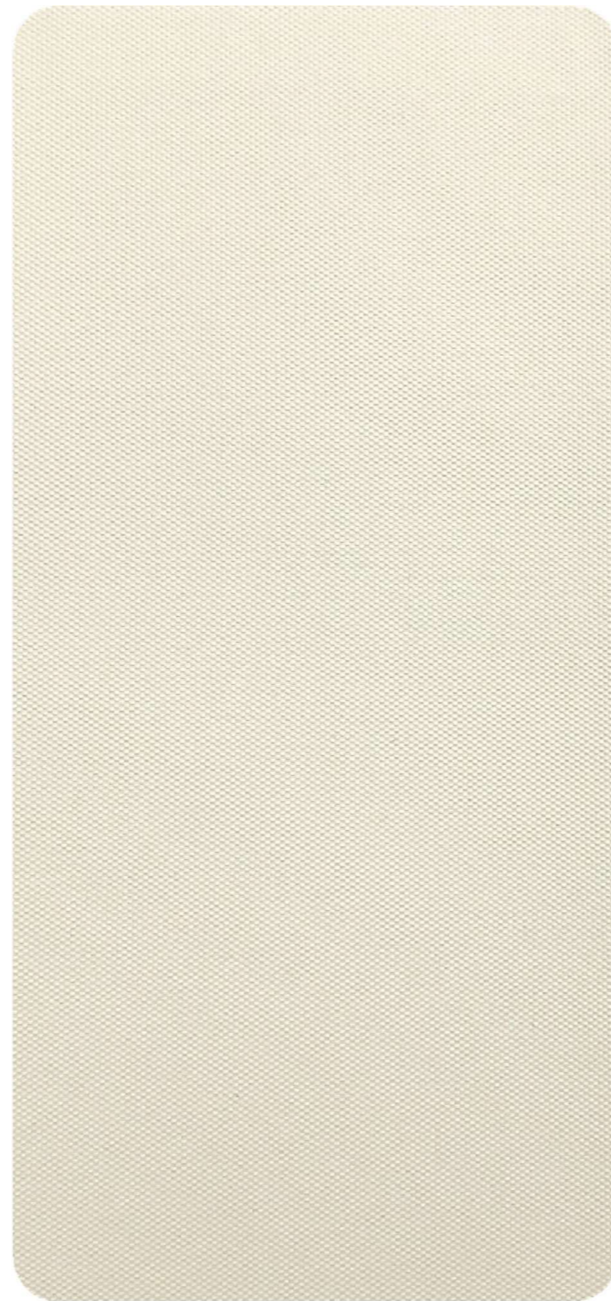
premium

Serge Ferrari

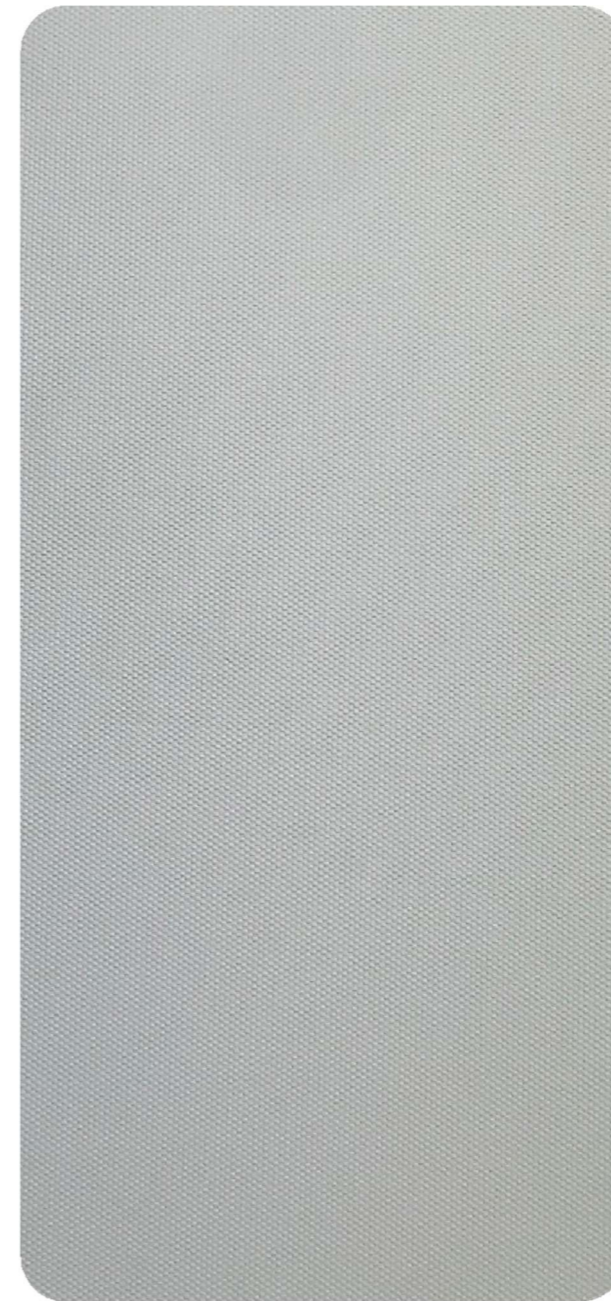
blackout fabric



PW213/White



PC211/Cream



PG209/Grey

Premium fabric serie is produced from black-out PVC and has 5 years warranty. Cover is water & light proof and flame retardant. The color tone and pattern level shown in this color swatch should be used only as a guide.



UV Resistant



No Pockets or Bubbles



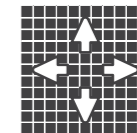
Flame Retardant



5 Years Guarantee



Thermal Comfort



Dimensional Stability



Tear Resistance

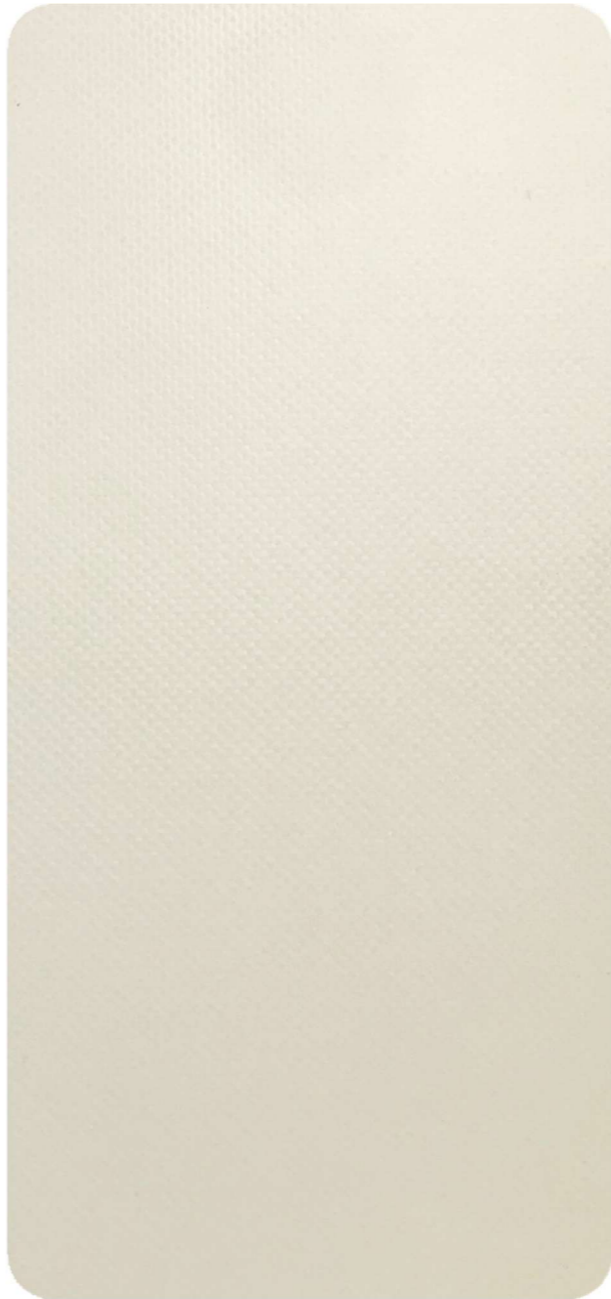
basic



blackout fabric



WT785/White



CR295/Cream

Basic fabric serie is produced from black-out PVC and has 5 years warranty. Cover is water & light proof and flame retardant. The color tone and pattern level shown in this color swatch should be used only as a guide.

- UV Resistant
- No Pockets or Bubbles
- Flame Retardant
- 5 years guarantee
5 Years Guarantee
- Thermal Comfort
- Dimensional Stability
- Tear Resistance

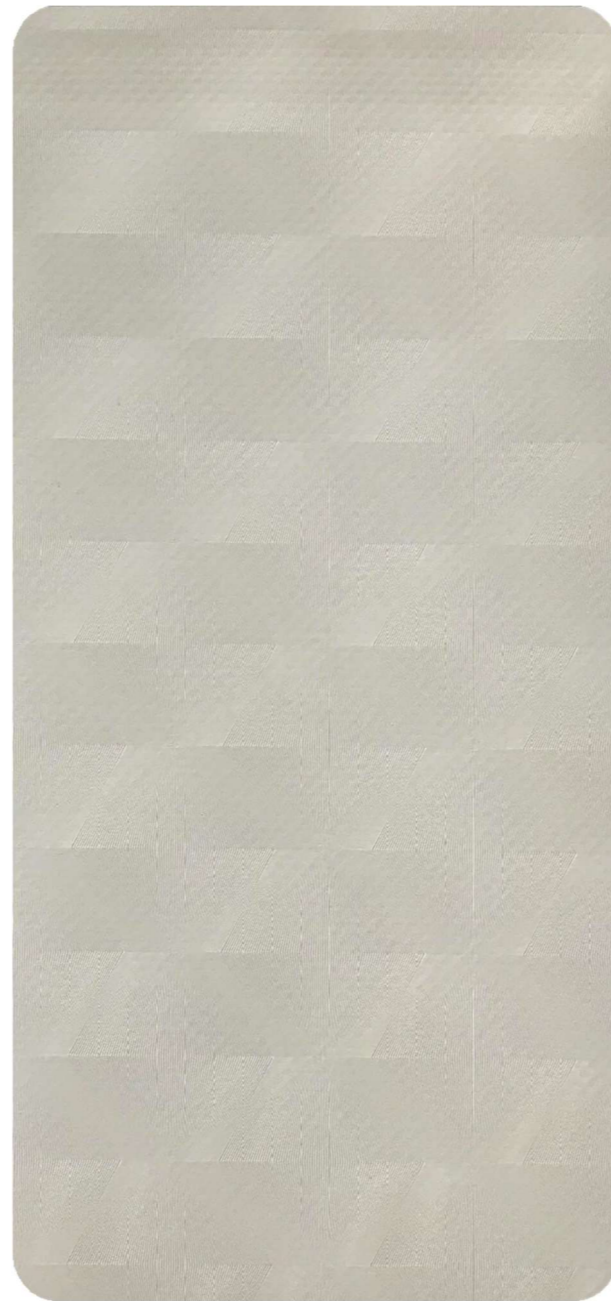
xclusive



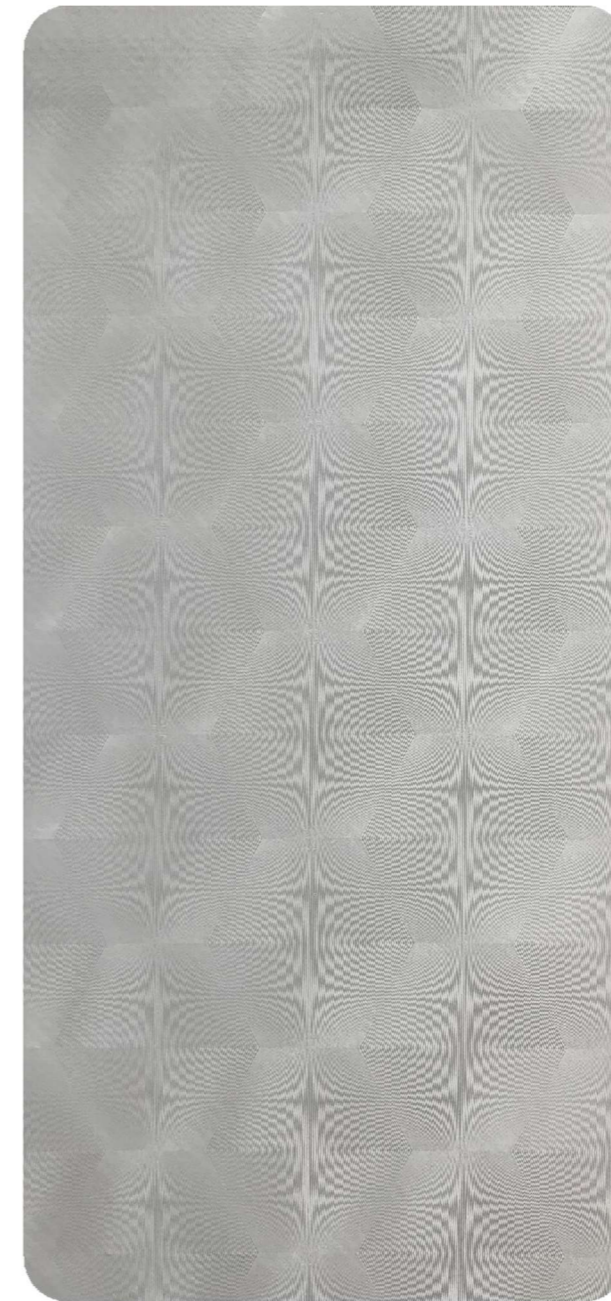
blackout fabric



WTEX/White



CRMX/Cream



GRYX/Grey



BRDX/Bordeaux

Xclusive fabric serie is produced from black-out PVC and has 5 years warranty. Cover is water & light proof and flame retardant. The color tone and pattern level shown in this color swatch should be used only as a guide.



UV Resistant



No Pockets or Bubbles



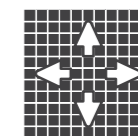
Flame Retardant



5 Years Guarantee



Thermal Comfort



Dimensional Stability



Tear Resistance

matt



blackout fabric



MW23/White



MC26/Cappuccino

Matt fabric serie is produced from black-out PVC and has 5 years warranty. Cover is water & light proof and flame retardant. The color tone and pattern level shown in this color swatch should be used only as a guide.



UV Resistant



No Pockets or Bubbles



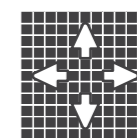
Flame Retardant



5 Years Guarantee



Thermal Comfort



Dimensional Stability



Tear Resistance

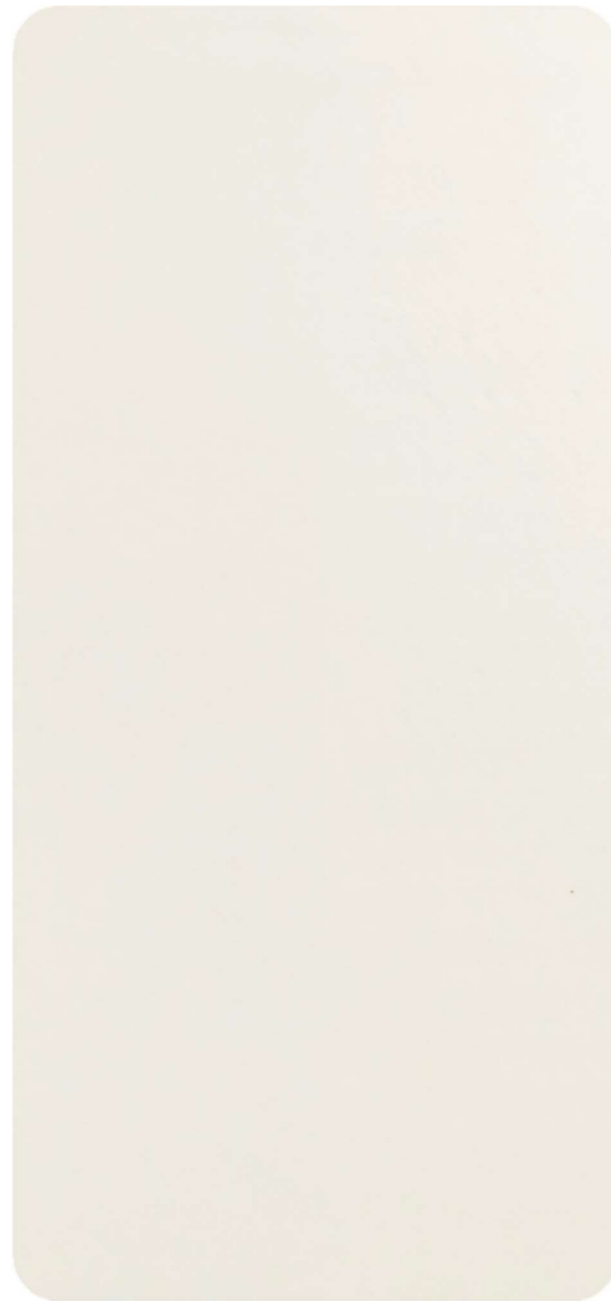
matt / linear fabric led



blackout fabric



LW22/White



LCR33/Cream



LC44/Cappuccino



LG66/Grey

Matt/Linear fabric led serie is produced from black-out PVC and has 5 years warranty. Cover is water & light proof and flame retardant. The color tone and pattern level shown in this color swatch should be used only as a guide. Available only with 'Linear Fabric Dimmer Led' option.



UV Resistant



No Pockets or Bubbles



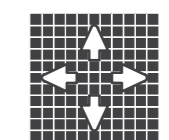
Flame Retardant



5 Years Guarantee



Thermal Comfort



Dimensional Stability



Tear Resistance

NEW semi-transparent



fabric



STRW22/White



STRB33/Black

Semi-transparent fabric serie is produced from PVC and has 2 years warranty. Cover is waterproof and flame retardant. The color tone and pattern level shown in this color swatch should be used only as a guide.



UV Resistant



No Pockets or Bubbles



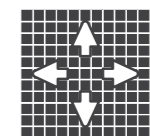
Flame Retardant



2 Years Guarantee



Thermal Comfort



Dimensional Stability



Tear Resistance

specifications

premium

Technical Specifications	Unit	Numbers
Weight	g/m ²	730
Thickness	mm	0.55
Warp/Weft Tensile Strenght	N/50 mm	2500/2500
Warp/Weft Tearing Strenght	N	200/200
Flame Retardant		B1/DIN 4102-1
Cold Resistance	°C	-30
Heat Resistance	°C	+70

basic

Technical Specifications	Unit	Numbers
Weight	g/m ²	800
Thickness	mm	0.7
Warp/Weft Tensile Strenght	N/50mm	3500/3500
Warp/Weft Tearing Strenght	N	350/350
Flame Retardant		B1/DIN 4102
Cold Resistance	°C	-40
Heat Resistance	°C	+70

matt/linearfabric dimmer led

Technical Specifications	Unit	Numbers
Weight	g/m ²	1150
Thickness	mm	1,05
Warp/Weft Tensile Strenght	N/50 mm	7000 / 6500
Warp/Weft Tearing Strenght	N	1000/1000
Flame Retardant		B1/DIN 4102
Cold Resistance	°C	-30
Heat Resistance	°C	+70

semi-transparent

Technical Specifications	Unit	Numbers
Weight	g/m ²	670
Thickness	mm	0.55
Warp/Weft Tensile Strenght	N/50 mm	3200/3000
Warp/Weft Tearing Strenght	N	450/400
Flame Retardant/ Alev Geciktirme		B1/DIN 4102
Cold Resistance/ Soğuk Dayanımı	°C	-25
Heat Resistance/ Sıcak Dayanımı	°C	+70

xclusive

Technical Specifications	Unit	Numbers
Weight	g/m ²	850
Thickness	mm	0.7
Warp/Weft Tensile Strenght	N/50mm	3000/3000
Warp/Weft Tearing Strenght	N	300/300
Flame Retardant		B1/DIN 4102
Cold Resistance	°C	-40
Heat Resistance	°C	+70

matt

Technical Specifications	Unit	Numbers
Weight	g/m ²	800
Thickness	mm	0.7
Warp/Weft Tensile Strenght	N/50 mm	3000/3000
Warp/Weft Tearing Strenght	N	300/300
Flame Retardant		B1/DIN 4102
Cold Resistance	°C	-40
Heat Resistance	°C	+70

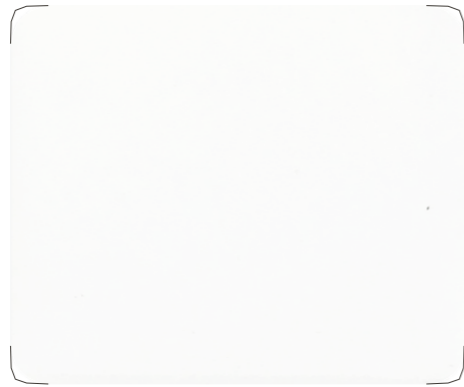
-/+ 5 % tolerance in all values

aluminum



basic

aluminum



RAL 9016



RAL 7006



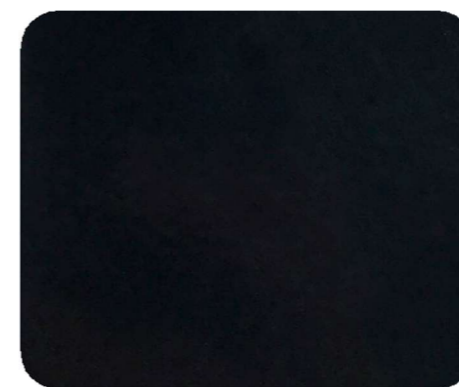
RAL 1013



RAL 7016



RAL 9006



RAL 9005

The color and gloss level shown in this color swatch should be used only as a guide.

exclusive

aluminum



OGN35



OGN39



OS561



ON617



OY395



ON611

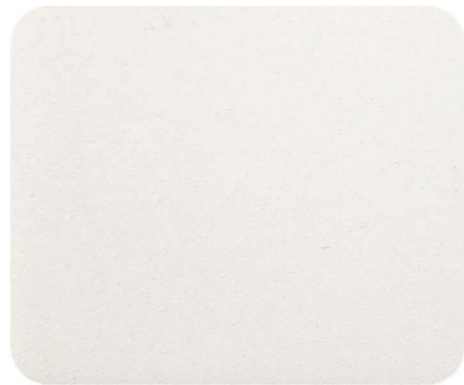
The color and gloss level shown in this color swatch should be used only as a guide.



ST9010



ST7039



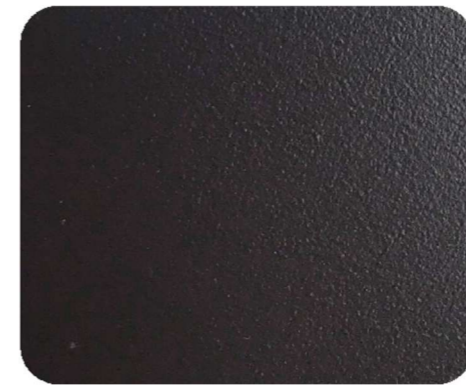
ST9001



ST7016



ST1013



ST8019

The color and gloss level shown in this color swatch should be used only as a guide.